



使用说明书

Instructions for use

个人装备: 救援、攀登、绳索、器材专业制造商



Professional manufacturer of industrial, outdoor, rope, equipment



Made in China
Hangzhou City, Zhejiang Province, China
3507, Xinghui Center, No. 723 Dayuan Road, Lin'an District, Hangzhou City, Zhejiang Province, China
3507
杭州临安安全大道路723号 霍安埃 723
E-mail: sales@hoater.com Web: www.hoater.com
Tel: 0086-571-6107777 Fax: 0086-571-6107772
HOATER (Hangzhou) Safety Technology Co., Ltd.
霍安埃 (杭州) 安全技术有限公司

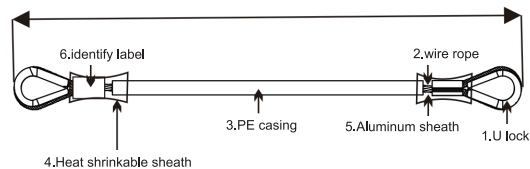
ENGLISH

Applic to anchor point:

HT-MD15-60、HT-MD15-80、HT-MD15-120、HT-MD15-150

Manufacturer: HOATER (Hangzhou) Safety Technology Co., Ltd.
3507, Xinghui Center, No. 723 Dayuan Road, Lin'an District, Hangzhou City, Zhejiang Province, China

Notified body for EU type examination and production control:
VVUU a.s (n°1019) Pikartská 1337/7, Ostrava-Radvanice, 716 07, Czech Republic



Main Material of the products : wire rope: 304 ; the diameter of the wire rope:6.5mm; the length of the anchor device is from 60cm-150cm.

Model number as below:

HT-MD15-60 :(the length of anchor device is 60cm)

HT-MD15-80 :(the length of anchor device is 80cm)

HT-MD15-120 :(the length of anchor device is 120cm)

HT-MD15-150: (the length of anchor device is 150cm)

CAREFULLY READ THESE INSTRUCTIONS BEFORE USING

This product is designed to provide protection against the danger of falling from heights.

APPLICATIONS

This anchor device is application in fall arrest system.

LIMITATIONS

Consider the following application limitations before using this equipment:

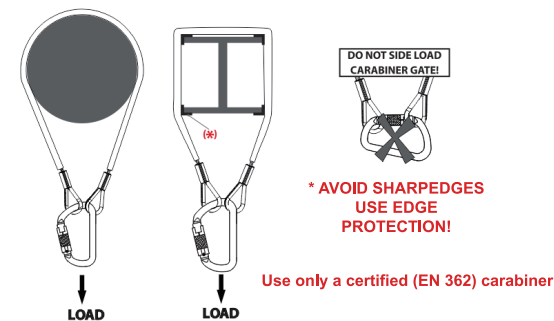
- 1.The equipment shall not be used outside its limitations, or for any purpose other than that for which it is intended.
- 2.The equipment shall only be used by a person trained and competent in its safe use.
- 3.The anchor device is for the use of one person only. No more than one personal protective system may be connected at one time.
4. When the anchor device is used as part of a fall arrest system, the user shall be equipped with a means of limiting the maximum dynamic forces exerted on the user during the arrest of a fall to a maximum of 6KN; (example : energy absorber , retractable fall arrester)
- 5.Capacity: These products are designed for use by persons with a combined weight(clothing, tools, etc.) of no more than 100KG.
- 6.Before use, the supervisors must consider about the risk of possible danger,A rescue plan needs to be established to deal with any emergencies that could arise during the work.
- 7.The equipment must only be used under supervision. Supervisors must plan for the prompt rescue of users in the event of a fall.
- 8.Ensure compatibility of all other products used with the equipment when assembled into a system.
- 9.The user should carry out a pre-use check of the equipment, to ensure that it is in a serviceable condition and operates correctly before it is used.
- 10.Check that metal components are not rusted or mechanically distorted, the wire rope should not have cuts or frays is not damaged anywhere. Withdraw the equipment from use if there is any doubt about its condition for safe use or if it has already arrested a fall, do not use it again until confirmed in writing by a competent person.
- 11.After a fall -components which have been subjected to the forces of arresting a fall must be removed from service and destroyed.
- 12.The life span of the product is 10 years but inspection, annually is important to check if any damages have occurred during usage.

INSTALLATION

Select a location on a suitable strength anchorage that will provide the best safety to the user. The structure to which the anchorage connector is attached must be free of corrosion, cracks, deformities, or other defects that may weaken the structure.Do not attach an anchorage connector to a vertical structure.

INSTALLING METHOD

Put the anchor device around a construction element (structural anchor point) e.g. a steel beam - drawing as below:



The direction of anchor device is vertical. The minimum static strength of anchor device is 12kN.

The maximum dynamic performance strength is 9kN

Permanent deformation not more than 10 mm in the direction of loading.

The Anchor device should be installed approximately six feet apart on roof trusses, no more than 4 feet from back of the perimeter of the building at the corner of the structure.

WARNING

- A)Against making any alterations or additions to the equipment without the manufacturer' s prior.
- B)Any equipment involved in sustaining a fall must be withdrawn from service and destroyed.
- C)Ensure that the medical conditions of the user is fit for using the equipment;the equipment shall only be used by a person trained and competent in its safe use;A rescue plan needs to be established to deal with any emergencies that could arise during the work. Users must be aware that forces experienced during the arrest of a fall or prolonged suspension may cause bodily injury.
- D)Dangers may arise by use of combinations of items of equipment in which the safe function of any one item is affected by or interferes with the safe functions of another. Ensure the compatibility of items of equipment when assembled into a system;
- E) instruction for the user to carry out a pre-use check of the equipment, to ensure that it is in a serviceable
- F)If the product is re-sold outside the original country of destination the reseller shall provide instruction for use, for maintenance, for periodic examination and for repair in the language of the country in which the product is to be used.
- G)Before use the anchor device please check the legibility of the product markings.

PERSONAL FALL ARREST SYSTEM

Anchor device is a personal issue item. The anchor device should only be used for personal fall protection equipment and not for lifting equipment. Assembly of components intended to protect the user against falls from a height, including a body holding device and an attachment system. Anchor device is a component of a fall arrest system, it can' t be use alone. And the full body harness is only suitable body holding device in a fall arrest system.

A fall arrest system shall include energy absorbing elements or functions to ensure that the impact forces on the body of the user during the arrest of a free fall are restricted to a maximum of 6 kN.

It is essential to verify the free space required beneath the user at work place before each occasion of use,so that, in the case of a fall, there will be no collision with the ground or other obstacle in the fall path.

The free space required beneath the user it need according the sub-system to calculate, such as energy absorber or fall arrester.

Avoid using in extremes of temperature, trailing or looping of lanyards of lifelines over sharp edges, chemical reagents, cutting, abrasion, climatic exposure & pendulum falls.

The anchor device for fall arrest system should always be positioned, and the work carried out in such a way, as to minimise both the potential for falls and potectial fall distance. the anchor device/ point should be place above the position of user. in such a way, as to minimise both the potential for falls and

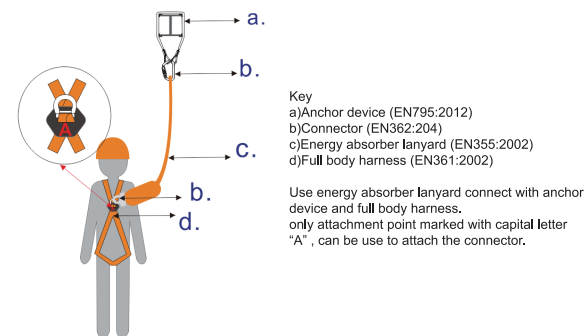
potential fail distance.The shape and construction of the anchor device/ point shall not allow to self-acting disconnection of the equipment. Minimal static strength of anchor device is 18 kn.

The anchor device must be used in conjunction with equipment which conform to the European standards (EN362 - EN361 - EN355 - etc.) and the user need make sure all recommendations of every equipment composing the fall arrest system are understood and applied.

Warning:

The user need understand every equipment composing the fall arrest system and application.

Example of used in the following applications:



INSTRUCTIONS FOR MAINTENANCE

- A)In case of minor soiling, wipe the anchor device with cotton cloth or soft brush. Do not use abrasive material. For intensive cleaning, wash the anchor device in water at temperature between 30°C to 60°C using a neutral detergent (pH±7). The washing temperature should not exceed 60°C.
- B) If the equipment becomes wet either from being in use or when due to cleaning, it shall be allowed to dry naturally and shall be kept away from heat.
- C) Preferably storage in a cool dry place packed in sealed polybags particularly away from damp environment, sharp edges, vibrations, ultra violet rays.
- D)This anchor device will be ensured that sufficiently packaged to prevent damage and deterioration during transportation. Using the original packing or in sealed polybag.

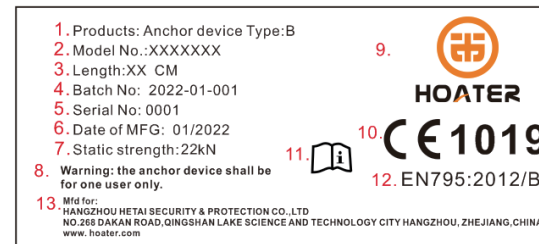
STORAGE AND TRANSPORT

- A) When not in use, store the product in a well-ventilated area away from extremes of temperature and to avoid all necessary preventative requirements where environmental or other factors could affect the condition of components, e.g. damp environment, sharp edges, vibration, ultra-violet degradation.
- B) Never place heavy items on top of it. If possible, avoid excessive folding and preferably store it hanging vertically. If necessary, please apply the lubricant on the metal component.
- C) For transporting the anchor device, it should be packed in a bag of suitable size and not together with any sharp edged tools.

DECLARATION OF CONFORMITY

Declaration of conformity for anchor device available on www.hoater.com

MARKING



- 1.Product name and product type
- 2.product model number (according the products length)

- 3.Length of product (according the products length)
 - 4.Batch number of the product
 - 5.Serial No. of the product
 - 6.Date of manufacture((Month(MM)and (Year)YYYY)
 - 7.Static strength:22kN
 - 8.Warning
 - 9.Company brand
 9. The CE mark showing that the product meets the requirements of the Regulation 2016/425 and 1019 means notified body for EU type examination and production control: VVUU a.s
 - 10 Means "Always read and follow the warnings and instructions for use"
 - 11.CE standard, EN795:2012/B
- Identification of the manufacturer address

INSTRUCTIONS FOR PERIODIC EXAMINATION

It's very important for regular periodic examinations , as the user's safety depends on the continued efficiency and durability of the equipment , at least do it once a year .

The periodic examination also including the requirement to check the legibility of the product marking.

The periodic examinations of the anchor device are only to be conducted by a competent person for periodic examination and strictly in accordance with the manufacturer' s periodic examination procedures.

Before use check the date of the next or last inspection in the instruction of equipment record part.

INSTRUCTIONS FOR REPAIR

The product has no repairable features hence the manufacturer does not allow any repair that can be carried out on the product whatsoever.

CHECK CARD

It is recommended that the product be inspected and examined by a competent person for any damages or failures usually if the need arises but at least once a year. The observations should be recorded in the table below. In case such damages are observed, the product should be replaced immediately.

