



使用说明书

Instructions for use

个人装备: 救援、攀登、绳索、器材专业制造商



Professional manufacturer of industrial, outdoor, rope, equipment



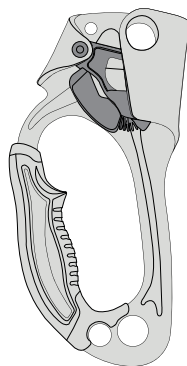
Made in China
Hangzhou City, Zhejiang Province, China
3507, Xinghui Center, No. 723 Dayuan Road, Lin'an District,
杭州临安天园路723号 邮编3507
E-mail: sales@hoater.net Web: www.hoater.com
Tel: 0086-571-6107757 Fax: 0086-571-6107752
HOATER (Hangzhou) Safety Technology Co., Ltd.
霍安克 (杭州) 安全技术有限公司

ENGLISH

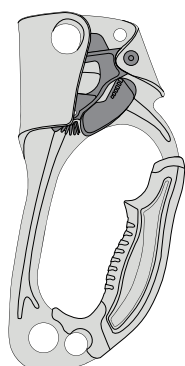
Applic to pulley : HT-A01 / HT-A02

Manufacturer: HOATER (Hangzhou) Safety Technology Co., Ltd.
3507, Xinghui Center, No. 723 Dayuan Road, Lin'an District, Hangzhou City, Zhejiang Province, China

Notified body for EU type examination and production control:
VVUÚ a.s (1019) Pikartská 1337/7, Ostrava-Radvanice, 716 07, Czech Republic



HT-A01



HT-A02

The use of HT-A01&HT-A02 is intended for mountaineering, climbing and rope access systems. This product meet European Standard EN567:2013 and EN12841:2006. This product must not be pushed beyond its limits, nor be used for any purpose other than that for which it is designed.

If the product is re-sold outside the original country of destination the reseller shall provide instructions for use, for maintenance, for periodic examination and for repair in the language of the country in which the product is to be used.

Suitable rope when use HT-A01& HT-A02: EN1891:1998-A
Diameter of the rope:8-12mm.

These instructions explain how to correctly use your equipment. Only certain techniques and uses are described.

The warning symbols inform you of some potential dangers related to the use of your equipment, but it is impossible to describe them all.

You are responsible for heeding each warning and using your equipment correctly.

Any misuse of this equipment will create additional dangers. Contact HOATER if you have any doubts or difficulty understanding these instructions.

RESPONSIBILITY:

The manufacturer or the distributor, will not accept any responsibility for damage, injury or death resulting from misuse of or from modifications to our products. It is the user's responsibility at all times to ensure that he/she understands the correct and safe use of any equipment supplied by or from the manufacturer, that he/she uses it only for the purposes for which it is designed and that he/she practices all proper safety procedures. Before using the equipment, take all necessary steps to familiarise yourself with rescue techniques should an emergency occur. You personally assume all the risks and responsibilities for your actions and decisions: if you are not able or not in a position to assume these, do not use this equipment.

WARNING

Activities involving the use of this equipment are inherently dangerous.

You are responsible for your own actions, decisions and safety.

Before using this equipment, you must:

- Read and understand all Instructions for Use.
- Get specific training in its proper use.
- Become acquainted with its capabilities and limitations.
- Understand and accept the risks involved.

Failure to heed any of these warnings may result in severe injury or death.

This product must only be used by competent and responsible persons, or those placed under the direct and visual control of a competent and responsible person. You are responsible for your actions, your decisions and your safety and you assume the consequences of same. If you are not able, or not in a position to assume this responsibility, or if you do not fully understand the Instructions for Use, do not use this equipment. This equipment is not suitable for use in a fall arrest system. The primary function of type B and type C rope adjustment devices is progression along the working line, and they shall always be used in conjunction with a type A rope adjustment device and a safety line. The product can be severely damaged if in contact with chemical reagents, and that the product should be withdrawn immediately if its safe functioning is in any doubt; Any overload or dynamic loading on the rope adjustment device may damage the anchor line.

INSPECT:

Before each use
verify that the product is free of cracks, deformation, marks, wear, corrosion...
Check the condition of the frame, the attachment holes, the cam and safety catch, the rivets, the springs and the cam axle.
Check the movement of the cam and the effectiveness of its spring.
Check that the cam's teeth are not fouled.
WARNING, do not use this ascender if it has missing or worn-out teeth.

During each use

It is important to regularly monitor the condition of the product and its connections to the other equipment in the system. Make sure that all items of equipment are correctly positioned with respect to each other.

WARNING, BEWARE:

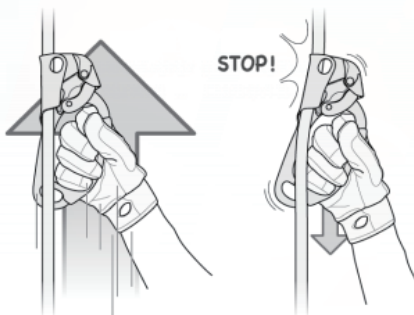
- of foreign objects that can impede the operation of the cam,
- of situations where the safety catch can snag and cause the cam to open.

Periodic examination

The hand ascender must be inspected by a competent person other than the user at intervals. The competent person inspection is referred to as Formal Inspection. Recommendation: in regard to the frequency of periodic examinations, taking account of such factors as legislation, equipment type, frequency of use, and environmental conditions. The periodic examination frequency shall be at least every 12 months. Warning to emphasize that periodic examinations are only to be conducted by a competent person for periodic examination and strictly in accordance with the manufacturer's periodic examination procedures. Also need check the legibility of the product markings in periodic examination.

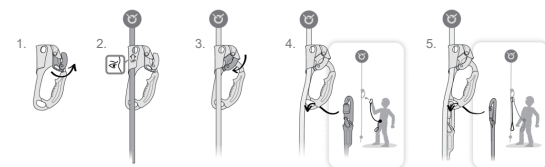
HOW TO USE THE PRODUCTS

Function principle and test



The ascender slides along the rope in one direction and locks in the other direction. The cam's teeth initiate a clamping action that pinches the rope between the cam and the frame. Each time the device is installed onto the rope, verify that it locks in the desired direction.

Installing the ascender

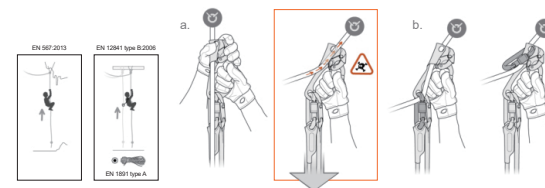


Pay attention to the Up/Down indicator.

To remove from the rope

Move the device up the rope while opening the safety catch to disengage the cam.

Ascending the rope



- a. The device must be loaded in a direction parallel to the rope. To avoid slippage of the device on rope, do not load it at an angle to the rope.
- b. If you cannot avoid loading at an angle to the rope, secure the rope with your lanyard connector.
- c. Do not climb above the ascender or the anchor point and keep your lanyard taut. Shock loading must absolutely be avoided when close to the anchor.

Compatibility

Verify that this product is compatible with the other elements of the system in your application (compatible = good functional interaction). Equipment used with your ascender must meet current standards in your country (e.g. EN 12275 carabiners for climbing/mountaineering use or EN 362 carabiners for industrial use). Make sure your connectors are compatible with the ascender (shape, size...).

When to retire your equipment:

WARNING: an exceptional event can lead you to retire a product after only one use, depending on the type and intensity of usage and the environment of usage (harsh environments, marine environment, sharp edges, extreme temperatures, chemicals...). A product must be retired when:
- It has been subjected to a major fall (or load).
- It fails to pass inspection. You have any doubt as to its reliability.
- You do not know its full usage history.
- When it becomes obsolete due to changes in legislation, standards, technique or incompatibility with other equipment...
Destroy these products to prevent further use.

Additional information

This product meets the requirements of Regulation (EU) 2016/425 on personal protective equipment. The EU declaration of conformity is available at [etai official website](http://etai.official-website.com).
- You must have a rescue plan and the means to rapidly implement it in case of difficulties encountered while using this equipment.
- The anchor point for the system should preferably be located above the user's position and should meet the requirements of the EN 795 standard (minimum strength of 12 kN).
- In a fall arrest system, it is essential to check the required clearance below the user before each use, in order to avoid any impact with the ground or with an obstacle in case of a fall.
- Make sure that the anchor point is correctly positioned, in order to reduce the risk and length of a fall.
- A fall arrest harness is the only device allowable for supporting the body in a fall arrest system.
- When using multiple items of equipment together, a dangerous situation can result if the safety function of an item of equipment is affected by the safety function of another item of equipment.
- **WARNING DANGER**, take care that your products do not rub against abrasive or sharp surfaces.
- Users must be medically fit for activities at height. **WARNING:** inert suspension in a harness can result in serious injury or death.
- The Instructions for Use for each item of equipment used in conjunction with this product must be followed.
- The Instructions for Use must be provided to users of this equipment

MAINTENANCE

Carefully clean and dry it to remove all dirt or foreign material and moisture. Minor sharp edges may be smoothed with a fine abrasive cloth, before cleaning. Store in a clean, dry place.

LIFETIME:

Lifetime of device is of 10 years from the date of manufacture under the following conditions: stocking is made as described in Storage and Maintenance sections, pre use, after use and periodic controls at least once every 12 months do not show any malfunction, deformation, wear, etc., maintenance has been made as in Maintenance section, the device has been correctly used, not exceeding of the breaking load. In extreme cases the lifetime of the product can be reduced to one single use through exposure to for example any of the following factors: chemicals, extreme temperature, major fall or loads, intense use, damage to components of the product.

STORAGE:

After cleaning, drying and lubrication store your product in a cool, dry, fresh (temperature 5-40°C) and safe (avoid U.V. radiation) place, chemically neutral (absolutely avoid salty environs) places. Avoid heat sources, exposure to UV, high humidity, sharp edges, corrosive substances or other possible detrimental conditions.

TRANSPORTATION:

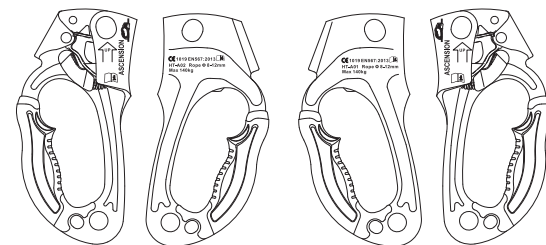
Protect the equipment against risks mentioned in Storage and Maintenance sections.

MATERIAL

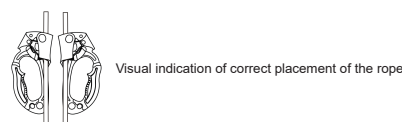
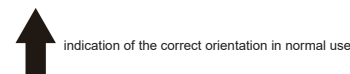
HT-A01 & HT-A02 Principal materials: aluminum alloy, stainless steel, technical plastic.

MARKING

The product is marked with:



HOATER means brand name
HT-A01 & HT-A02 means model number;
Ø8-12 mm means HT-A01& HT-A02 suitable rope is 9-12mm
EN567:2013 & EN12481:2006: means European standard and public year,



MAX 4kN means maximum rated load.
Read the instruction for use

CE means conform according to Regulation 2016/425; the vertical dimension of the CE marking not less than 5mm
1019 means notified body number (VVUÚ a.s., Pikartská 1337/7, Ostrava-Radvanice, 716 07, Czech Republic)
XX/YY:branch number, xx express: month, yy express:year.

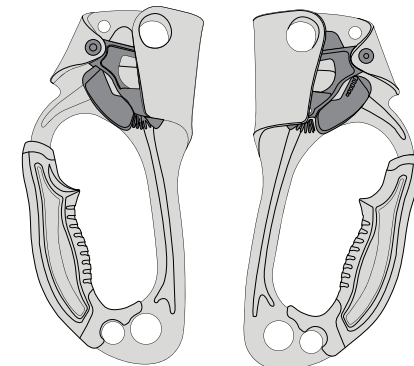
Warning: The marking should be periodically checked for the legibility and marking shall be clearly, durably and permanently marked by any mean without effect on material.

Declaration of conformity

Declaration of conformity for harness HT-A01&HT-A02 available on www.hoater.com

CHINESE

货号: HT-A01 / HT-A02
制造商: 霍安克 (杭州) 安全技术有限公司
中国浙江省杭州市临安区天园路 723 号星汇中心 3507
欧盟型式检验和生产控制认证机构:
VVUÚ a.s (1019) Pikartská 1337/7, Ostrava-Radvanice, 716 07, Czech Republ



HT-A01

HT-A02



